

CERTIFICATE OF ANALYSIS

Complement Technology, Inc.
4801 Troup Hwy, Suite 701
Tyler, Texas 75703, USA

Product: **Rat Factor H**
Catalog # **R137** Lot #
Exp. Date:

Description: Purified Rat Complement Protein Factor H

<u>Specifications</u>	<u>Limits</u>	<u>Results</u>
PROTEIN CONCENTRATION	0.95 – 1.2 mg/mL. Factor H has an extinction coefficient of $E^{1\%}_{280nm} = 16.82$	1.03 mg/ml
FILL VOLUME	0.100 – 0.110 mL	0.106 mL
BUFFER	Phosphate, buffered Saline, pH 7.2	Phosphate, buffered saline, pH 7.2
PRESERVATIVE	None, filtered through a 0.22 μ m pore size filter.	None, filtered through a 0.22 μ m pore size filter.
PURITY	> 90%	\geq 95% by SDS-PAGE
IMMUNOCHEMISTRY	\leq trace amounts of IgG, IgM, albumin	Conforms
STARTING MATERIAL	Rat serum from healthy animals	Conforms
GENDER	Mixed	Conforms

* Extinction coefficient is calculated from the amino acid sequence of rat factor H using ProtParam and assumes all pairs of Cys residues form cystines.

STORE AT -70°C or BELOW.
Thaw quickly at 37°C, mix, and put in an ice + water bath to cool.
Avoid Repeated Freeze/Thaw

FOR RESEARCH USE ONLY
NOT FOR HUMAN OR DRUG USE

Signature of Analyst

Date of Analysis

THIS IS A GENERIC REPRESENTATION



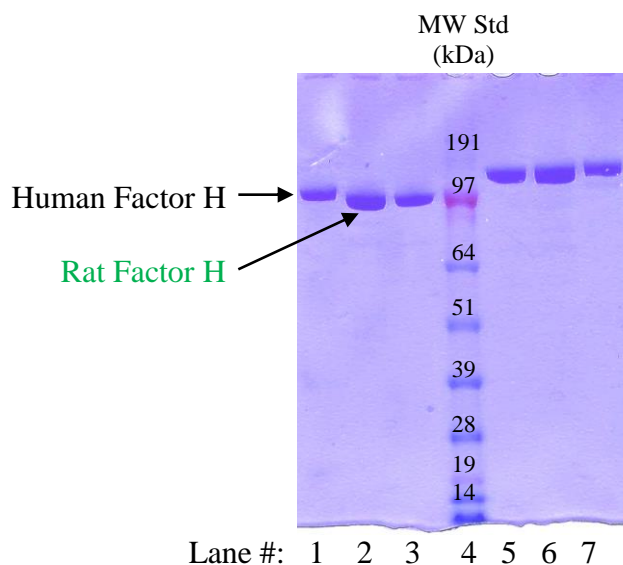
CompTech

Complement Technology, Inc.
4801 Troup Hwy, Suite 701
Tyler, Texas 75703

Cat# R137, Purified Rat Complement Protein Factor H

SDS-PAGE Gel Information

NuPAGE 4-12 % Bis-Tris Gel from Invitrogen
1 mm thick gel
MOPS running buffer
Sample size = 12ul/lane
200 Volts constant for 50 min
Stained with Coomassie Brilliant Blue R-250
Run date: 1/26/2021



Lane #1: 2 µg Human Factor H
Lane #2: 3.0 µg Rat Factor H
Lane #3: 2.0 µg Rat Factor H
Lane #4: See Blue Plus 2 prestained standard
Lane #5: 2.0 µg Rat Factor H + DTT
Lane #6: 3.0 µg Rat Factor H + DTT
Lane #7: 2.0 µg Human Factor H + DTT

Phone: 1-903-581-8284 FAX: 1-903-581-0491
Email: contactCTI@ComplementTech.com
Web Site: www.ComplementTech.com