

CERTIFICATE OF ANALYSIS

Complement Technology, Inc.
4801 Troup Hwy, Suite 701
Tyler, Texas 75703, USA

Product: **Mouse C1q Protein**
Catalog # **M099** Lot #
Exp. Date:

Description: Purified Mouse Complement Protein C1q

<u>Specifications</u>	<u>Limits</u>	<u>Results</u>
PROTEIN CONCENTRATION	0.90 – 1.2 mg/mL C1q C1q has an extinction coefficient of $E^{1\%}_{280nm} = 7.53$	1.0 mg/ml
FILL VOLUME	0.100 – 0.120 mL	0.110 mL
BUFFER	10 mM HEPES, 300 mM NaCl, pH 7.2	10 mM HEPES, 300 mM NaCl, pH 7.2
PRESERVATIVE	None, filtered through a 0.22 μ m pore size filter.	None, filtered through a 0.22 μ m pore size filter.
PURITY	$\geq 85\%$	$\geq 93\%$ by SDS PAGE
IMMUNOCHEMISTRY	\leq trace amounts of IgG, IgM, albumin	Conforms
STARTING MATERIAL	Mouse serum/plasma from healthy animals	Conforms
GENDER	Mixed	Conforms

STORE AT -70°C or BELOW.
Thaw quickly at 37°C, mix, and put in an ice+water bath to cool.
Avoid Repeated Freeze/Thaw

FOR RESEARCH USE ONLY
NOT FOR HUMAN OR DRUG USE

Signature of Analyst

Date of Analysis

THIS IS A GENERIC REPRESENTATION



CompTech

Complement Technology, Inc.
4801 Troup Hwy, Suite 701
Tyler, Texas 75703

Cat# M099, Purified **Mouse Complement** Protein C1q

SDS-PAGE Gel Information

NuPAGE 4-12 % Bis-Tris Gel from Invitrogen

1 mm thick gel

MOPS running buffer

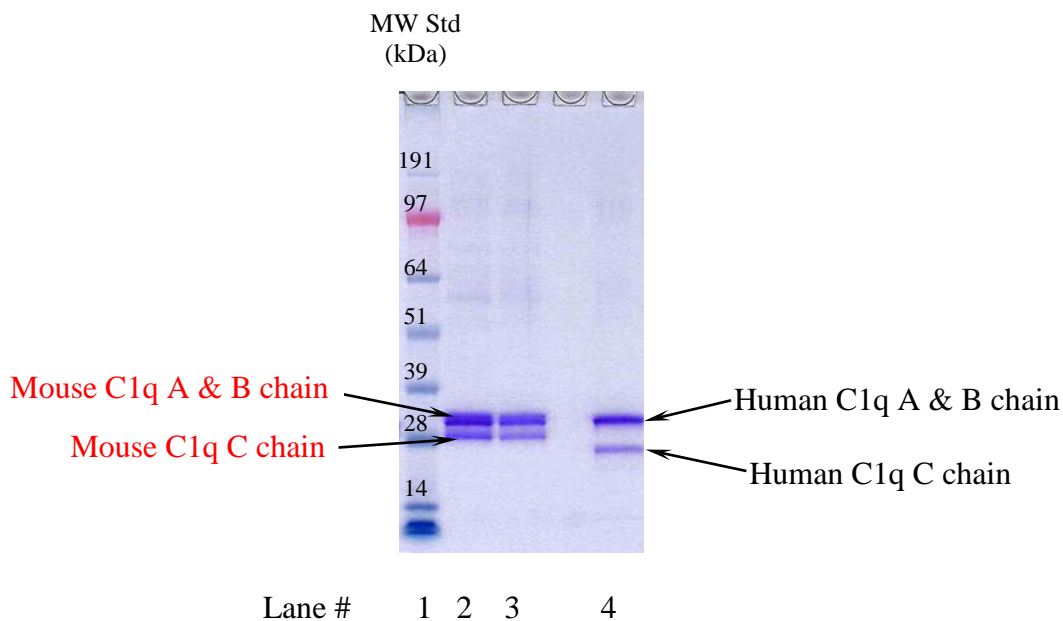
Sample size = 12 ul/lane

See Blue Plus 2 Prestained Standards from Invitrogen

200 Volts constant for 50 min

Stained with Coomassie Brilliant Blue R-250

Run date: 4/13/2020



Lane #1: See Blue Plus 2 Prestained Standards

Lane #3: 3 μ g **Mouse C1q** + DTT

Lane #3: 2 μ g **Mouse C1q** + DTT

Lane #4: 2 μ g Human C1q + DTT

Phone: 1-903-581-8284 FAX: 1-903-581-0491

Email: contactCTI@complementtech.com

Web Site: www.ComplementTech.com