

# CERTIFICATE OF ANALYSIS

**Complement Technology, Inc.**

4801 Troup Hwy, Suite 701

Tyler, Texas 75703, USA

Product: **Rat C1q Protein**Catalog # **R099** Lot #

Exp. Date:

**Description:** Purified Rat Complement Protein C1q

<u><b>Specifications</b></u>	<u><b>Limits</b></u>	<u><b>Results</b></u>
PROTEIN CONCENTRATION	0.95 – 1.2 mg/mL C1q C1q has an extinction coefficient of $E^{1\%}_{280nm} = 6.315^*$	1.03 mg/ml
FILL VOLUME	0.100 – 0.120 mL	0.110 mL
BUFFER	10 mM HEPES, 300 mM NaCl, pH 7.2	10 mM HEPES, 300 mM NaCl, pH 7.2
PRESERVATIVE	None, filtered through a 0.22 $\mu$ m pore size filter.	None, filtered through a 0.22 $\mu$ m pore size filter.
PURITY	$\geq 85\%$	$\geq 93\%$ by SDS PAGE
IMMUNOCHEMISTRY	$\leq$ trace amounts of IgG, IgM, albumin	Conforms
STARTING MATERIAL	Rat serum from healthy animals	Conforms
GENDER	Mixed	Conforms

\* Extinction coefficient is calculated from the amino acid sequence of rat C3 using ProtParam and assumes all pairs of Cys residues form cystines.

**STORE AT -70°C or BELOW.****Thaw quickly at 37°C, mix, and put in an ice + water bath to cool.****Avoid Repeated Freeze/Thaw****FOR RESEARCH USE ONLY  
NOT FOR HUMAN OR DRUG USE**

---

Signature of Analyst

---

Date of Analysis

THIS IS A GENERIC REPRESENTATION



CompTech

Complement Technology, Inc.  
4801 Troup Hwy, Suite 701  
Tyler, Texas 75703

Cat# R099, Purified **Rat Complement** Protein C1q

## SDS-PAGE Gel Information

NuPAGE 4-12 % Bis-Tris Gel from Invitrogen

1 mm thick gel

MOPS running buffer

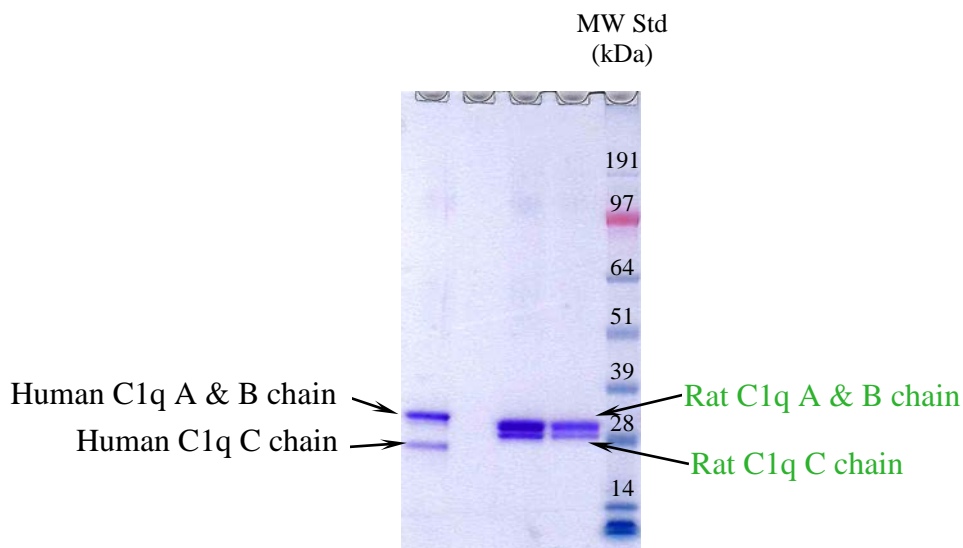
Sample size = 12 ul/lane

See Blue Plus 2 Prestained Standards from Invitrogen

200 Volts constant for 50 min

Stained with Coomassie Brilliant Blue R-250

Run date: 4/13/2020



Lane # 1 2 3 4

Lane #1: 2  $\mu$ g Human C1q + DTT

Lane #3: 3  $\mu$ g **Rat C1q** + DTT

Lane #3: 2  $\mu$ g **Rat C1q** + DTT

Lane #4: See Blue Plus 2 Prestained Standards

Phone: 1-903-581-8284 FAX: 1-903-581-0491

Email: [contactCTI@complementtech.com](mailto:contactCTI@complementtech.com)

Web Site: [www.ComplementTech.com](http://www.ComplementTech.com)